



**onYsID**

swipe reader



Read personal data out of the machine-readable zone from documents such as passports, ID cards, driver's licenses (if applicable). The bi-directional swipe slot guarantees easy and hassle-free handling even for non-experienced users. The bright, multicolor LEDs give a clear and highly

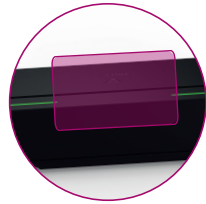
visible status feedback. You decide where to install the onySwipe, using one of the 6 flexible routing positions for the USB cable.

Smart and stylish design - all of the above is managed in a device housing as compact as an iPhone!



#### Easy to use

Bi-directional usage of swipe slot possible. User guidance system on both ends for best handling and read results.



#### ePassport & NFC tag reading

Optional built-in antenna makes NFC and biometric chip reading possible. Just tap the document or device against the onySwipe to start the reading process.



#### Energy-efficient & flexible routing

USB powered including built-in cable channel with 6 flexible routing positions on the device bottom.



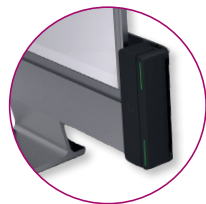
#### Contact Chip Card reading

Optional built-in contact chip card reader allows you to insert card for contact chip reading within seconds.



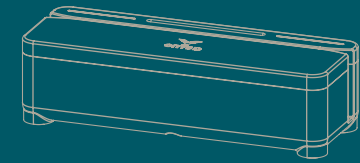
#### Status indicators

2x multicolor status LEDs. Placed next to swipe slot for best visibility and clear feedback on device status and read results.



#### Mounting options

Multiple mounting options possible. Secure the onySwipe on a flat surface such as a table, counter top or wall. Mounting to a screen is possible with additional VESA mount.



# onySwipe

## DOCUMENTS



## USAGE

Read data from MRZ (ICAO 9303). Optional: ePassport and NFC or contact chip card reading.

## SPECIALITY

Available as standalone or OEM version.

## TECHNICAL DETAILS

- USB 2.0 connection
- Interfaces: VCOM, PCSC (RFID & NFC reading)
- NFC & RFID reading possible according to ISO 14443 A/B
- Contact chip card reading according to ISO 7816
- Audible feedback via buzzer
- USB powered
- Various cable outlets
- Various mounting options: screw inlets in device base
- Compliant to: WEEE, RoHS, FCC and CE (EN55032 ClassB)

## MEASUREMENTS

Standalone:	140 x 50 x 41 mm, 5.5 x 2 x 1.6 inches
OEM:	approx. 72 x 35 x 16 mm, 2.8 x 1.4 x 0.6 inches
Cable:	1.8 meters   70.86 inches