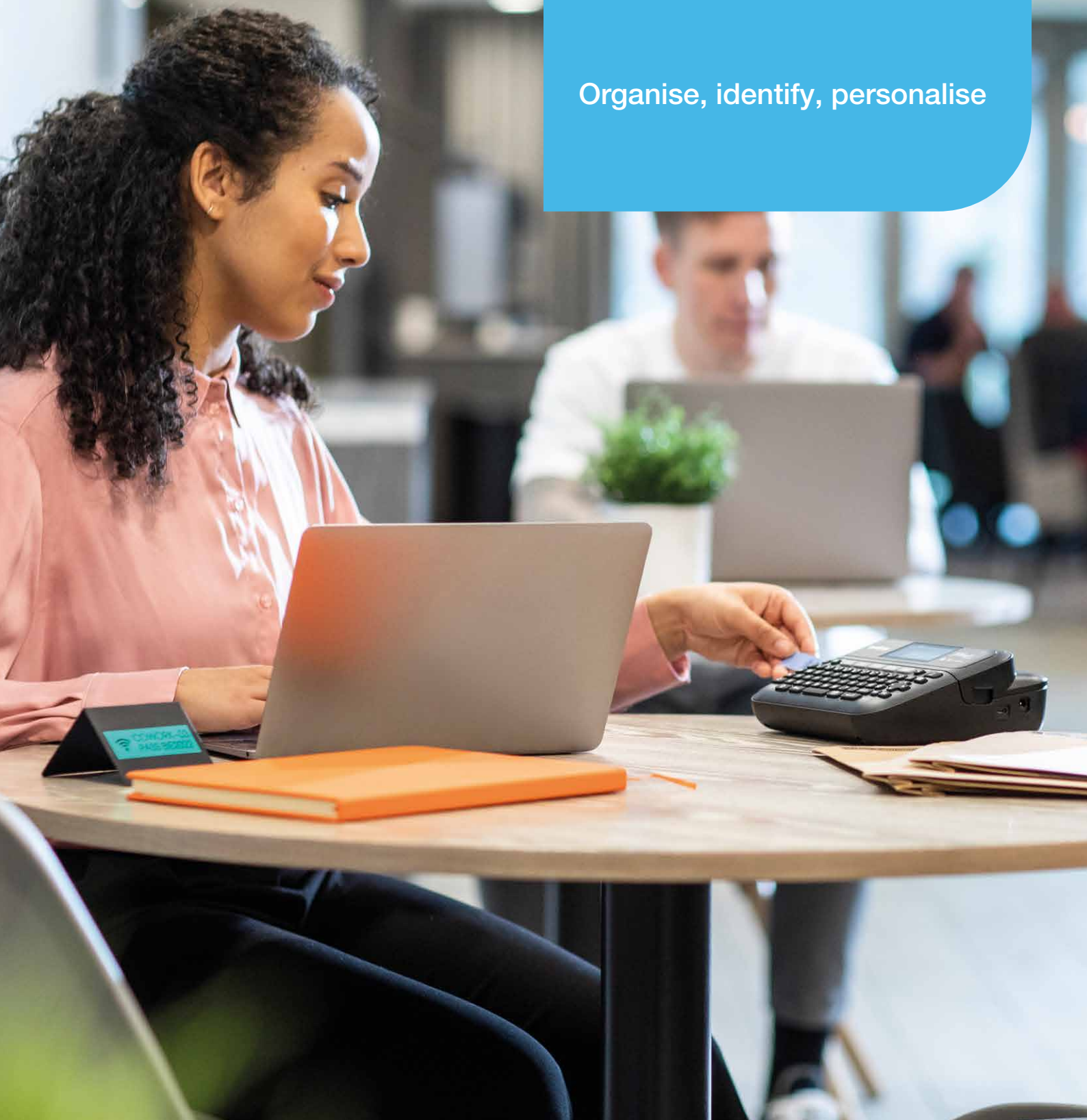


Versatile P-touch desktop label printers

Organise, identify, personalise





Versatile label printers

The new P-touch desktop range of label printers offers versatile solutions for all labelling needs, including SOHO/home office, large office and retail environments, as well as wider business vertical applications.

Simple, one-touch solutions

With a built-in QWERTY keyboard and large graphical display which includes print preview, the new PT-D-series models are user-friendly and designed for ease-of-use, fast-typing and optimal desktop handling.

Expanded options for creating labels

The PT-D-series models are perfect for straightforward standalone use, as well as PC/Smartphone connectable* and offer additional label design functionality when paired with Brother's iPrint&Label app, plus brand new P-touch Editor 6.0 software**. These applications provide expanded options for creating labels beyond basic usage, including specially designed, ready-made templates and the option to create fully customised labels.

* PT-D410 offers USB connectivity only. PT-D460BTVP & PT-D610BTVP models offer both USB and Bluetooth connectivity.

** To be released Fall 2022.



The PT-D Series line-up

The new PT-D Series suits a diverse range of labelling requirements, from home office, through to larger offices, coworking spaces and retail environments. With three label printers to choose from, each model is designed with these specific environments in mind and equipped with features tailored to the needs of the user.

With this in mind, the PT-D-series range offers the flexibility to simply 'trade up' through the models to achieve greater connectivity and functionality depending on your requirements – from basic, standalone use with the entry level PT-D410 to more advanced options to print labels using smartphone apps with the PT-D610BTVP.



PT-D210VP



PT-D410



PT-D460BTVP



PT-D610BTVP

Summary of features

	PT-D210VP	PT-D410	PT-D460BTVP	PT-D610BTVP
Built-in QWERTY keyboard for ease of typing	●	●	●	●
Large graphical display to review text and layout before printing	●	●	●	●
Full colour, high-resolution back-lit display	-	-	-	●
Label storage for quick reprint of frequently used labels	-	-	70	99
USB connectable for PC printing	-	●	●	●
Bluetooth connectivity	-	-	●	●
Advanced label design software (PT Editor 6.0)*	-	●	●	●
Media width capacity	12mm	18mm	18mm	24mm
Max. print speed	20mm/s	20mm/s	30mm/s	30mm/s
Carry case	●	-	●	●

* To be released Fall 2022.

Label printer with Bluetooth connectivity and label template downloading for business use



Create labels using the built-in keyboard, download the app and use your smart device via Bluetooth, or connect to a PC via USB for additional labelling functionality

Full colour, high-resolution back-lit display

Fast print speeds and automatic tape cutter for high volume jobs

High print resolution for crisp barcodes, graphics and logos when connected to a computer

Store up to 99 labels for quick reprinting

Print on labels up to 24mm wide

Download template functionality

Included: AC adapter, carry case, TZe 24mm black on white laminated tape (4m), USB cable and documentation



PT-D610BTVP





PT-D460BTVP



Label printer with Bluetooth and USB for workspaces

Create labels using the built-in keyboard, download the app and use your smart device via Bluetooth, or connect to a PC via USB for additional labelling functionality

Large graphic display for easy label editing

Preview labels before printing

QWERTY keyboard for easy typing

Store up to 70 labels for quick reprinting

Print on label tapes up to 18mm wide

Included: AC adapter, carry case, TZe 18mm black on white laminated tape (4m), USB cable and documentation



PT-D410



Label printer with USB for home and office use

Create labels using the built in keyboard, or connect to a computer via USB for additional labelling functionality, using P-touch Editor 6.0 software*

Graphic display for easy label editing

Preview labels before printing

QWERTY keyboard for easy typing

Print on label tapes up to 18mm wide

Included: TZe 18mm black on white laminated tape (4m), USB cable and documentation



PT-D210VP

Entry-level home office label printer

Create decorative labels with various patterns, using the built in keyboard

Graphic display for easy label editing

Preview labels before printing

QWERTY keyboard for easy typing

Print on label tapes up to 12mm wide

Included: AC adapter, carry case, TZe 12mm black on white laminated tape (4m) and documentation



Durable Brother TZe label tapes

Specifically designed for the P-touch range of label printers, our laminated TZe tapes have been rigorously tested to stand up to even the harshest conditions. With excellent resistance to water, abrasion, chemicals and temperature extremes, they'll remain legible over time.



They're easy to peel and stick, and come in a variety of colours, widths and sizes. From standard laminated to matt and premium laminated, TZe tapes are suitable for almost any application. Plus, they're designed to work perfectly with your Brother P-touch.





View the full range of label tapes
www.brother.eu/supplies

Environments and applications



PT-D410



PT-D460BTVP

Home Office / SOHO

Transform your home working space with a professional label printer from Brother. The PT-D410 and PT-D460BT models offer a compact, easy-to-use label printer which prints clear, laminated labels to help personalise your important files and folders, identify home office equipment and cables and organise your storage boxes. Taking the time to carefully label your home office results in an organised work space which increases overall productivity and allows you to focus on the real task at hand.



Applications include:

- Storage labels
- Stationary labels
- Equipment labels
- File and folder labels
- Cable management labels
- Shelf labels





PT-D460BTVP



PT-D610BTVP



PT-D610BTVP

Office

From files and asset management to workspace and meeting room organisation, the The PT-D460BT and PT-D610BT models allow you to create an organised and comfortable working environment for all employees, resulting in maximum productivity in the office. Furthermore, make life straightforward for visitors with name tags and office signage labels.

Retail

Conveying product information and special offers to customers quickly and clearly is crucial in any retail environment. With the PT-D610BT model, you can print QR codes for customer scanning, as well as durable barcode labels to track your inventory, which increases the overall efficiency of your stock management function and enables you to keep track of what your customers want. The PT-D610BT will optimise your day-to-day operations both on the shopfloor and behind the scenes and maximise the customer experience.

Applications include:

- Asset management labels
- Personal item labels
- Name tag labels
- File and folder labels
- Drawer labels
- Office signage labels

Applications include:

- Product name labels
- Product information labels
- Shelf edge labels
- Stock management labels
- Signage labels
- Sale/discount pricing labels



Software and applications



PT Editor 6.0*

Supplied as standard, you can create your own custom labels with pixel precision using this brand new software solution by connecting your label printer to your PC using USB connectivity. The PT Editor 6.0 software* offers newly updated features including increased number of specially designed templates, additional number/time & date/ barcode functionality and an overall user interface refresh to provide a truly connected solution for creating custom labels.

* To be released Fall 2022.

Key features:

- Wide range of pre-designed templates for a variety of home office and business applications
- Customisable templates for flexible editing with over 1200 symbols and 30+ fonts
- Easily find labels you've created in the past, or share labels to Brother label editing apps on your smartphone
- Import data from excel and other databases directly onto labels
- Straightforward barcode/2D code label creation
- Create multilingual labels containing different language symbols using Unicode
- Customise labels to include your company logo





iPrint&Label App

Brother iPrint&Label is a free application that enables you to easily print labels from your Apple iPhone or iPad, Android smartphones and tablets to a Brother label printer using Bluetooth connectivity. Create labels through the P-touch Editor 6.0* label design software, then simply share to a smartphone or tablet to print, save or edit on the mobile app for a fully integrated solution.

Key features:

- Fully customisable layout, including the option to add boxes, lines and move objects, as well as resize and rotate
- Access to pre-designed templates
- Hundreds of symbols and clip-art
- Add images, photos and logos to your label
- Add barcodes to labels, including QR code 1D barcode
- Improved and modern looking user interface for ease-of-use, including the ability to quickly reprint saved or frequently used labels to save time
- Import contact details directly from your device onto labels



App Store



Google Play



* To be released Fall 2022.

brother
at your side

Contact:

brother.dk
brother.ee
brother.fi
brother.is
brother.no
brother.lv
brother.lt
brother.se

All specifications correct at the time of printing and are subject to change. Brother is a registered trademark of Brother Industries Ltd.
Brand product names are registered trademarks or trademarks of their respective companies.