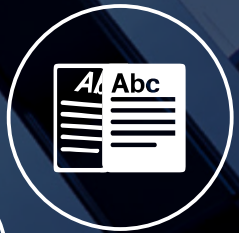


# Complete document management solution



# Capture

Epson's Document Capture software suite is a range of easy-to-use scanning solutions for capturing, separating and routing documents around your business and beyond.

**Document Capture Pro 2.0** enables individuals to scan, save and share information around the business easily. Advanced features for naming, separating and routing documents makes scanning easy - and logical. Save and send files in common formats like PDF, jpeg, tiff and other formats. Create simple job profiles for one-touch push scanning.

**Document Capture Pro Server 2.0** is a powerful, server based software for our network scanners and multi-function devices. Document Capture Pro Server 2.0 allows administrators to centrally manage job profiles and devices. Monitor fleet performance without having to install software on individual computers. Use simple functions to scan documents intuitively and securely. For more advanced needs, add your own plugins with our software-developer kit.

# Enhance

Epson's Document Capture Pro software includes features designed to enhance and improve an original document. This ensures that the best quality is achieved for future data integrity.

**Auto-rotation** reduces document preparation time by automatically adjusting scans so they are the right way up.

**De-skew** straightens documents so they are consistent and easy to read.

**Enhanced text** sharpens text for improved legibility.

**Resolution** can be adjusted via the scanner's dpi settings to enhance or reduce image detail as required.

**Hole punch** marks can be removed from the document automatically.

**Dual output** creates two digital files with one scan. Set different file formats and destinations, and even scan settings, with parameters customised by the user.



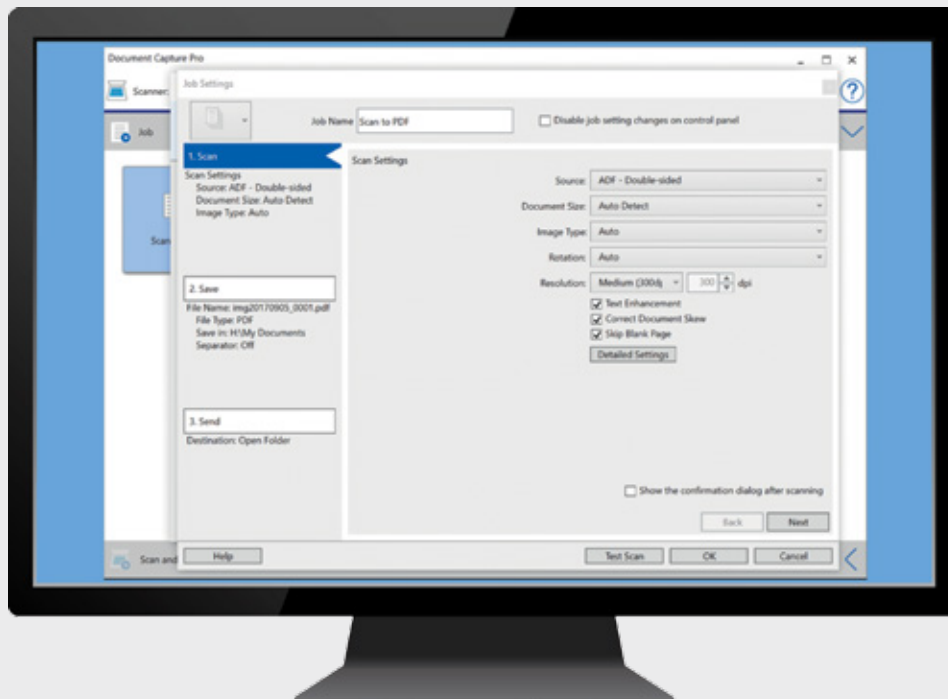
1D & 2D  
barcodes



Correct  
document  
skew



Zonal OCR  
file naming



Text  
enhancement



Auto-rotation



Patch-code

Control every step with Epson's Document Capture Suite.



[www.epson.eu/documentcapturepro](http://www.epson.eu/documentcapturepro)

Authentication Edition

# Separate



# Manage

Automatically sort and separate batches of paper documents.

## Optical Character Recognition (OCR)

With the ability to detect 29 languages types – Built-in OCR can separate documents from each other via pre-defined templates and use that data to automatically name files and folders. In addition create fully searchable files to easily find the information within scanned documents.

**Fixed page** separates each specified page into individual files.

**Blank page** allows sensitivity detection to be set to low, medium or high when separating documents.

**Barcode** scanning abilities capture and use a wide variety of barcodes, including 1D and 2D, to separate documents.

**Patch code** detects Patch 1, 2, 3, 4, 6, and T to separate documents.

The latest version of Document Capture Pro enables easy remote management of an entire fleet of multi-function printers and scanners<sup>1</sup>.

## Document Capture Pro Server Authentication Edition

lets IT infrastructure managers control scanning tasks centrally, including user access rights and log-ins, job profiles, and even device management.

Device access can be controlled by IT managers easily using LDAP Active Directory, user ID and password, access card login, and PIN code. Upon authentication, users gain access to bespoke job profiles, which ensures greater control and maximises data integrity. Additional lockdown functions minimise unauthorised user access and profile amendments, thereby helping to protect system integrity.



# Features

| Features   | Epson Scan 2 | Document capture for Mac | Document Capture Pro | Document Capture Pro Server | Document Capture Pro Server Authentication Edition |
|--|--------------|--------------------------|----------------------|-----------------------------|--|
| <b>Image enhancement &amp; editing features</b>  |              |                          |                      |                             |  |
| Automatic document size detect, document rotation, paper and contents skew   | •            | •                        | •                    | •                           | •  |
| Dynamic skip blank page, background removal and edge fill  | •            | •                        | •                    | •                           | •  |
| Text enhancement   | •            | •                        | •                    | •                           | •  |
| Auto Area Segmentation - Black and white picture enhancement   | •            | •                        | •                    | •                           | •  |
| Remove Hole Punches (top & bottom, left & right or all edge)   | •            | •                        | •                    | •                           | •  |
| Dual Image Output (Scan once with dual scan output)  | •            | •                        | •                    | •                           | •  |
| Automatic Feeding Mode*  | •            | •                        | •                    | •                           | •  |
| Scan, Save and Send Intuitive user interface with simple mode option   | -            | •                        | •                    | -                           | -  |
| Job profile creation - Up to 30 jobs for one touch scanning  | -            | •                        | •                    | •                           | •  |
| Server controlled device management including network panel control functions  | -            | -                        | -                    | •                           | •  |
| Server controlled user management - LDAP, ID Card and Pin Code administration  | -            | -                        | -                    | -                           | •  |
| Post scan desktop productivity features to edit scanned files  | -            | •                        | •                    | -                           | -  |
| <b>File Save &amp; Send Functions</b>  |              |                          |                      |                             |  |
| Supports all common file formats: BMP, JPEG, TIFF, M-TIFF, PDF, PDF/A  | •            | •                        | •                    | •                           | •  |
| Create Searchable PDF in over 29 languages*  | •            | •                        | •                    | •                           | •  |
| Export documents to Microsoft SharePoint, FTP, web folders, local and network folders, printer, email, Google drive, SugarSync, Evernote | -            | •                        | •                    | •                           | •  |
| Export documents to Docx, Pptx, Xlsx formats   | -            | •                        | •                    | •                           | •  |
| Export to Microsoft OneNote and Dropbox via an optional Document Capture Pro connector   | -            | •                        | •                    | -                           | -  |
| Create customised export connection via Application Programming Interface (API)  | -            | •                        | •                    | •                           | •  |
| <b>Job Creation Functions</b>  |              |                          |                      |                             |  |
| Push scan with pre-registered job profiles   | -            | •                        | •                    | •                           | •  |
| Job separation (Patch code, barcode, blank page, Form recognition, Zonal OCR)  | -            | •                        | •                    | •                           | •  |
| Folder Naming by Barcode recognition, Zonal OCR  | -            | •                        | •                    | •                           | •  |
| Monitored folders  | -            | •                        | •                    | -                           | -  |
| Device monitoring through web interface and notification mails   | -            | -                        | -                    | •                           | •  |
| Remote device control panel lock function  | -            | •                        | •                    | •                           | •  |
| <b>OS compatibility</b>  |              |                          |                      |                             |  |
| Windows XP (32/64bit), Windows Vista (32/64bit), Windows 7 (32/64bit), Windows 8/8.1 (32/64bit), Windows 10 (32/64bit)                   | •            | -                        | •                    | -                           | -  |
| Windows Server 2008/2008 R2, Windows Server 2012/2012 R2, Windows Server 2016/2016 R2  | •            | -                        | -                    | •                           | •  |
| Mac OS X 10.8 or later   | -            | •                        | -                    | -                           | -  |

1. Available on selected models.

For further information please contact your local Epson office or visit [www.epson-europe.com](http://www.epson-europe.com)

Algeria (+2213) 770 938 617 Austria 01 253 49 78 333 Belgium +32 (0)2 792 04 47 Czech 800/142 052 Denmark 44 50 85 85 East Africa (+254) 734 354 075  
 Finland 0201 552 091 France 09 74 75 04 04 (Cost of local call, operator charges may apply) Germany +49 (0) 2159/92 79 500 Greece (0030) 211 198 62 12  
 Hungary 06800 147 83 Ireland 01 436 7742 Israel (+972)-3-5751833 Italy 02-660321 10 (0,12 €/min) Luxembourg +352 27860692 Middle East +9714 8872172  
 Morocco (+212) 661 31 11 18 Netherlands +31 (0)20 708 5099 Norway +47 67 11 37 00 Poland 0-0-800 4911299 (0,16 zł/min) Portugal 707 222 111  
 Russia (095) 777-03-55 Slovakia 0850 111 429 Southern Africa (+2711) 465-9621 Spain 93 582 15 00 Sweden 0771-400135 (Mobilsamtal - 0,99 kr/min,  
 Lokala samtal - 0,30 kr/min, Utlandssamtal - 0,89 kr/min) Switzerland 022 592 7923 Tunisia (+216) 9833 3571 Turkey (0212) 3360303  
 United Kingdom 0871 222 6702 West Africa (+234)8020727843

Trademarks and registered trademarks are the property of Seiko Epson Corporation or their respective owners.  
 Product information is subject to change without prior notice.

**EPSON**®